



DSM Fine Chemicals Site Linz

St. Peter Str. 25
A-4021 Linz
Austria
Telephone: +43 70 6916-0



Directions to the Site Linz

From Vienna and Salzburg

Leave the A1 east-west motorway at the „Knoten Linz“ interchange and turn onto the A7 motorway (signposted Prag, Freistadt, Linz).

Leave the A7 at the exit „Chemiepark Linz“. Keep going until you come to a roundabout, stay right and leave the roundabout the first right exit.

From Freistadt and Prague

Coming from the north on the A7, leave the motorway at the exit „Chemiepark Linz“. At the first crossing turn left, at the roundabout stay right and leave the roundabout the first right exit.

From Passau/ Suben

Follow the A8/A25 until it merges with the A1. Take direction to Linz/Wien. Follow the A1 to „Knoten Linz“ interchange with the A7. Turn onto the A7 motorway (signposted Prag, Freistadt, Linz).

Leave the A7 at the exit „Chemiepark Linz“. Keep going until you come to a roundabout, stay right and leave the roundabout the first right exit.

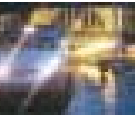
If you are driving a car or bus please use our visitors' parking and go directly to the information desk at the main entrance. If you are driving a truck please use our separate goods entrance.



Airport Linz

From the Linz Airport you have daily connections to Frankfurt, Düsseldorf, Zürich, Amsterdam, Brussels and Vienna.

The Airport is 10 km in the west of Linz, by taxi it takes you 20 min. to the City Center and also to „Chemiepark Linz“.



Central Train Station Linz

Linz is located at the main route from Vienna to Salzburg. From The trainstation it takes you 10 min. by taxi to the „Chemiepark Linz“.

If you are staying in Linz over night, we recommend the following hotels.



Courtyard by Marriot

Approx. 10 min. from Chemiepark Linz, 15 min. walk from City Center

Address: Europaplatz 3

Telephone +43 70 69 59 -0

Arcotel Nike

Approx. 15 min. from Chemiepark Linz, 10 min. walk from City Center

Address: Untere Donaulände 9

Telephone +43 70 7626-0

