

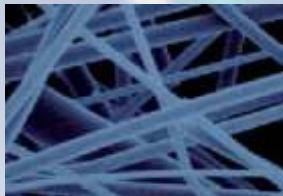
# Finding solutions is our business....

# .... And we're pretty good at it

RAPID &amp; RELIABLE

DSM Resolve  
P.O.Box 18  
6160 MD Geleen  
Netherlands  
tel.+31 (0)46 4760100  
info.Resolve@dsm.com  
www.dsm-resolve.com

## Business Case Resolve 047



## Lapinus Fibres and DSM Resolve: added value

Lapinus Fibres, based in Roermond (Netherlands), is an acknowledged international specialist in engineered mineral fibres and a member of the Rockwool Group. By attuning the unique properties of mineral fibres to its customers' demands, it has succeeded in developing fibres with an extremely high added value for certain specific markets.

Lapinus Fibres' special-purpose mineral fibres are used primarily in reinforcing materials, brake pads and linings, gaskets and plastic products. And the number of applications just gets longer and longer. It is not without reason that the company is the world's biggest supplier of special-purpose mineral fibres.

### Specialist experience

We at DSM Resolve are proud to contribute to Lapinus Fibres' success. From our analytical laboratories at Research Campus Geleen in the Netherlands, we offer customers like Lapinus Fibres the combined advantages of highly sophisticated equipment, many years of experience and total dedication. Just the cocktail for helping them to improve their products and increase their market shares.

We specialize in the chemical and physical analysis of polymer materials and fine and bulk chemicals. We use our special combination of technology and expertise to solve special problems, always in close collaboration with our customers. And we reckon we do a pretty good job.

### New markets

Our partnership with Lapinus Fibres has already produced some memorable results. For example, after we had examined the distribution of a special coating over the surface of the mineral fibres, Lapinus Fibres was able to use our findings to adapt the fibres' properties more closely to the demands of the application.

Our specialist research can have highly tangible implications. For example, we used a range of microscopic techniques to examine the behaviour of fibres in brake pads. Our findings enabled Lapinus Fibres to improve certain mineral fibres, thereby not only making car brakes more efficient and safer, but also reducing environmental pollution.

Our research into the fracture behaviour and stiffness of fibres has helped Lapinus Fibres to develop new products, much to the satisfaction of its Manager of Research and Development, Dolf van der Veen: 'DSM Resolve's materials knowledge and wide-ranging analytical facilities help us to retain our competitive edge.'